

April Superintendents Report

May 14, 2024

April received 4.42 inches of precipitation.

Total flow for April was 22.87 MGD Binghamton = 16.92 MGD, Johnson City = 5.96 NGD for a total of 686,240,000 gallons.

CBOD = 8mg/L, TSS = 5 mg/L, NH3 = 0.202 mg/L, Phos = 0.459 mg/L, TN = 4.39 mg/L.

Micro-Turbines produced 92,216 KWH.

Solar produced 6,247 KWH.

April briefly:

CN Modulating valve was put back on-line.

Work continued with the DEC on the New Permit.

North Grit conveyor was repaired.

RSP here for Micro-Turbines

Electrical dept. closed our Tie switch to allow NYSEG to work on 3B Feed at Harpur station.

Our Lab received its Certification.

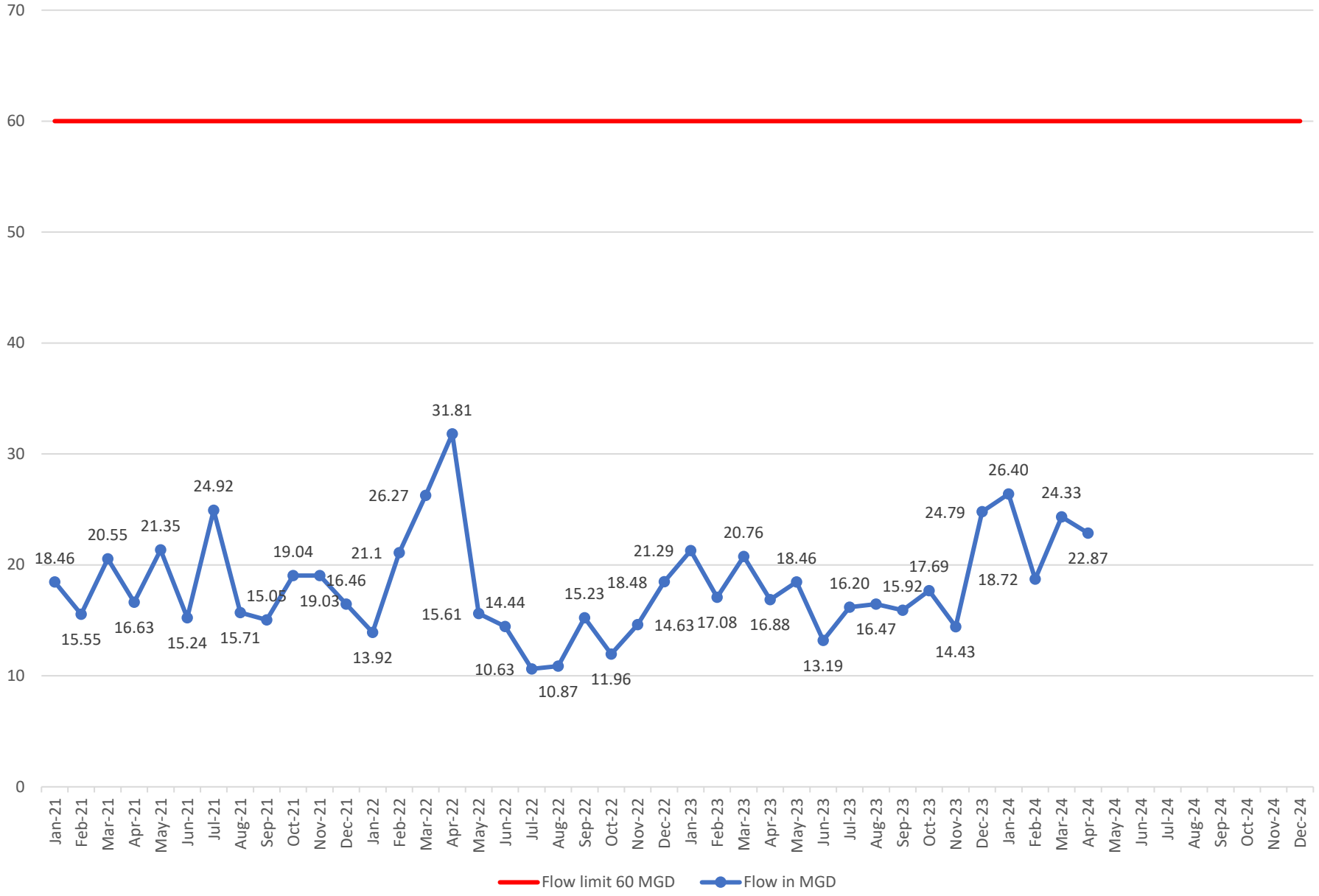
Auto skimmers are being inspected and wear surfaces swapped. Safety dept. holding Hazwoper, right to know, Workplace violence safety training.

The Business Manager completed her 2 master's level Human resources classes with an A in each.

We have two operators at school in Morrisville.

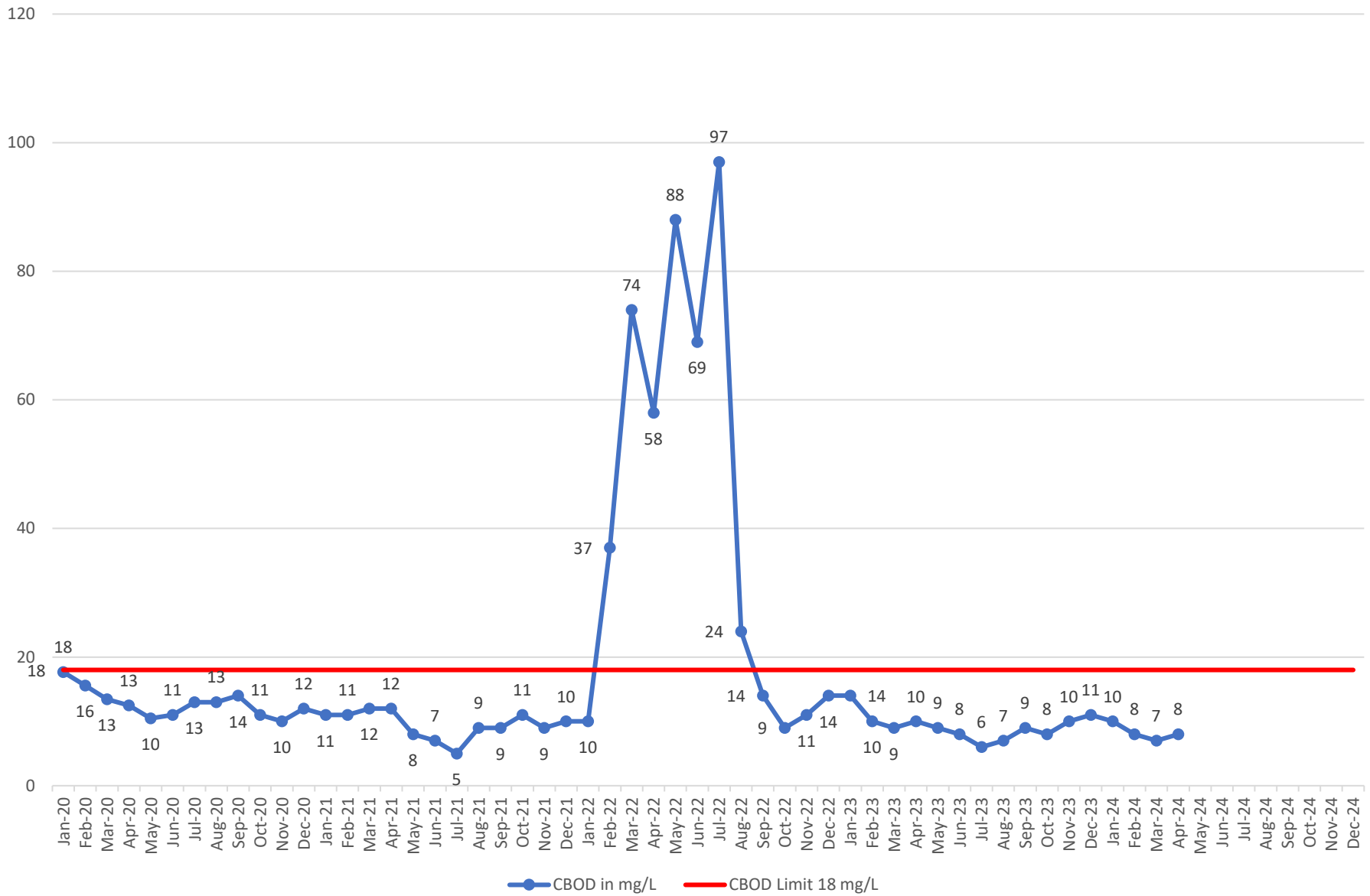
We continue making progress on our 5-year plan with weekly meetings.

2021-2024 Flow



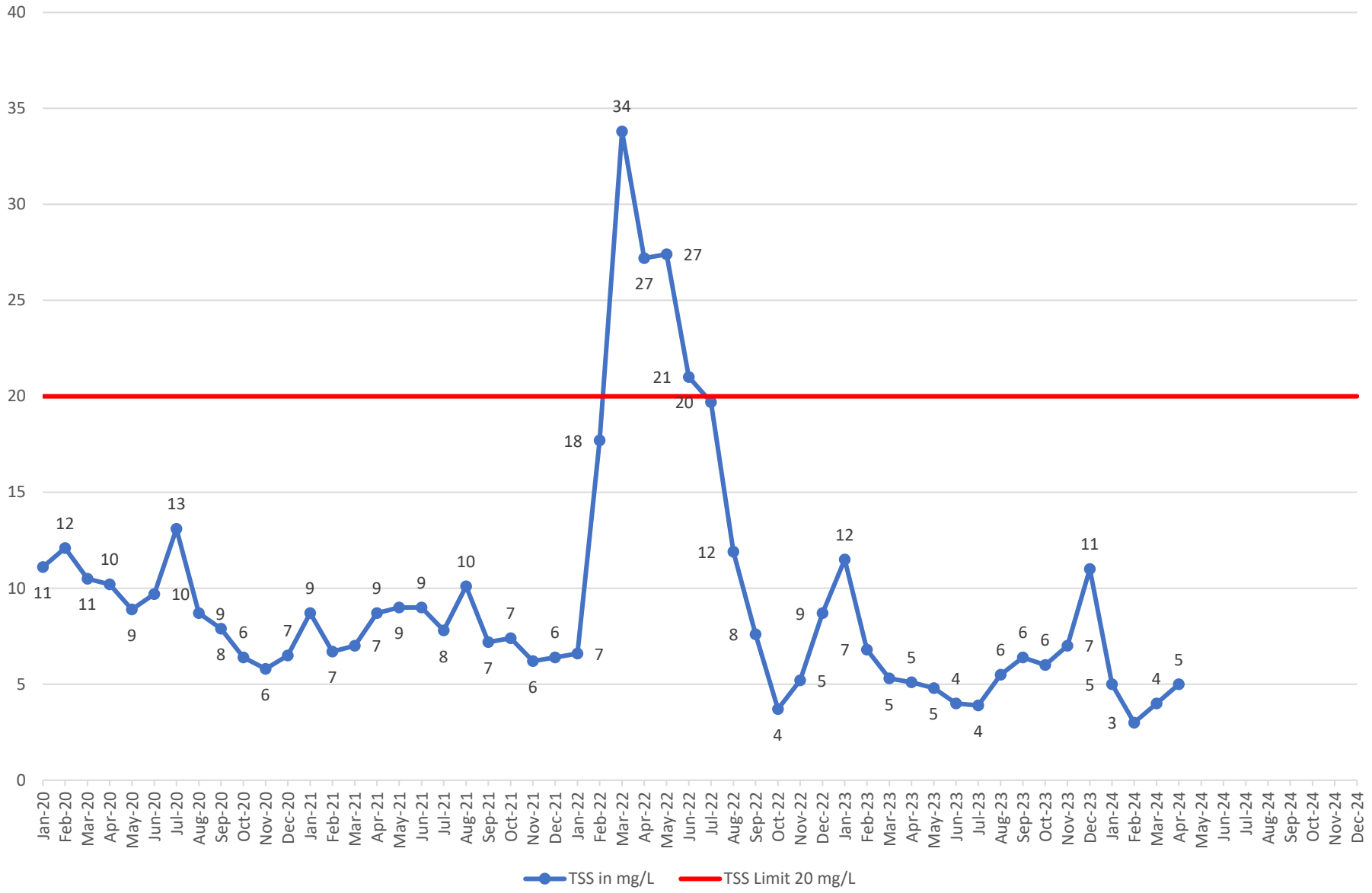
2020-2024 CBOD

Limit = 18 mg/L/Day Monthly Avg

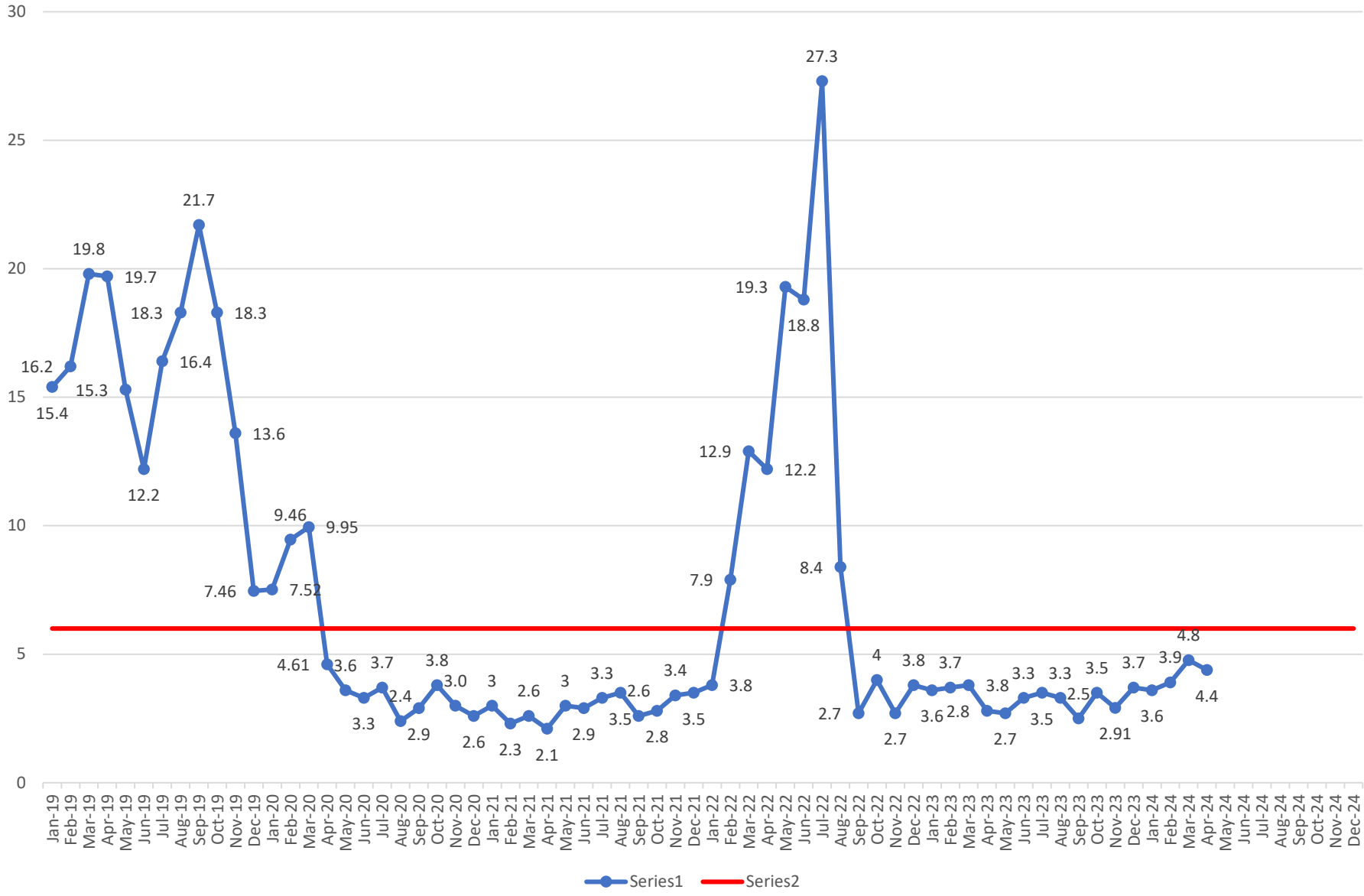


TSS 2020-2024

Limit = 20 mg/L/Day Monthly Avg

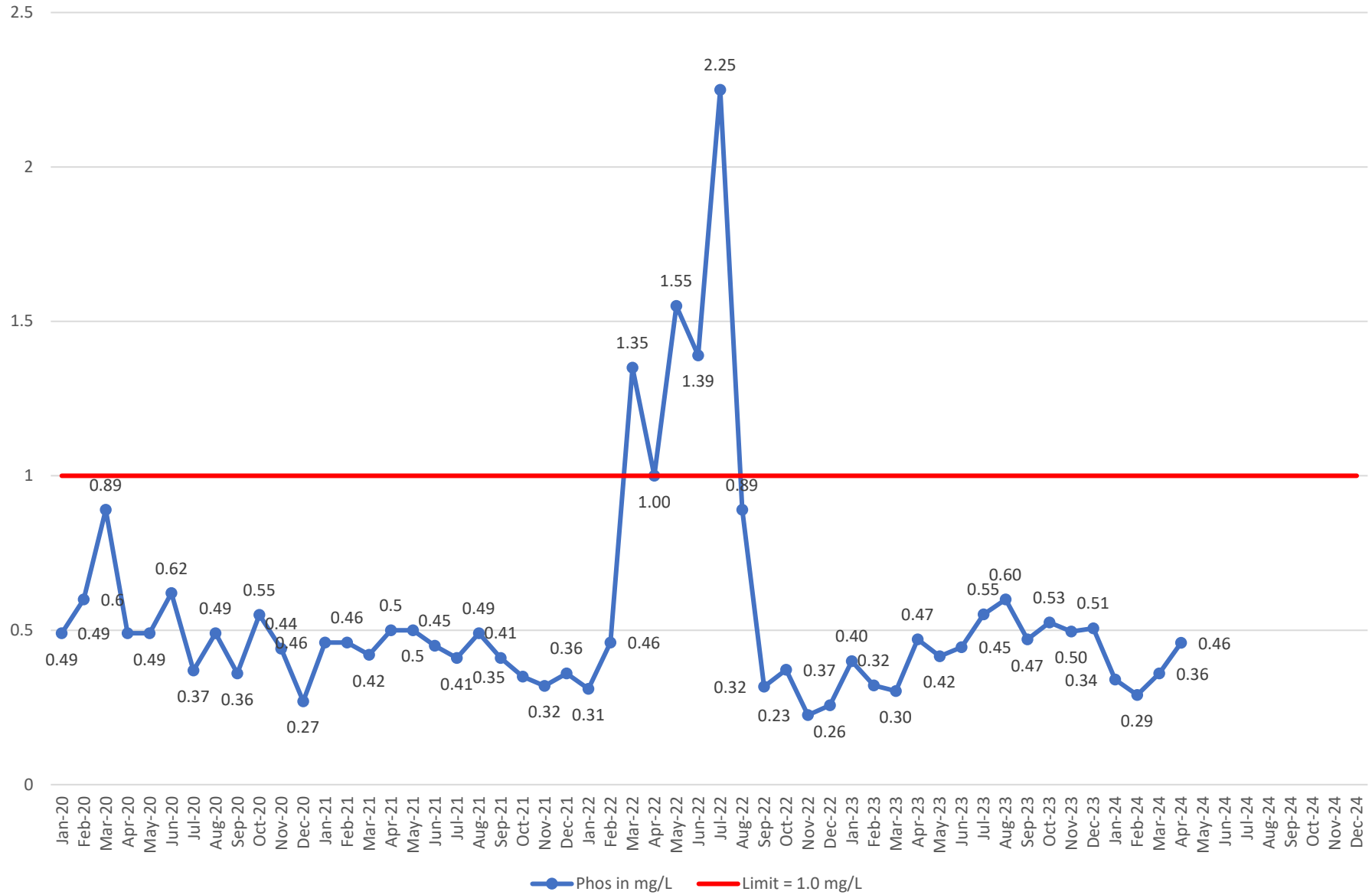


TN 2019-2024
Limit = 6.0 mg/L /Day Monthly Avg

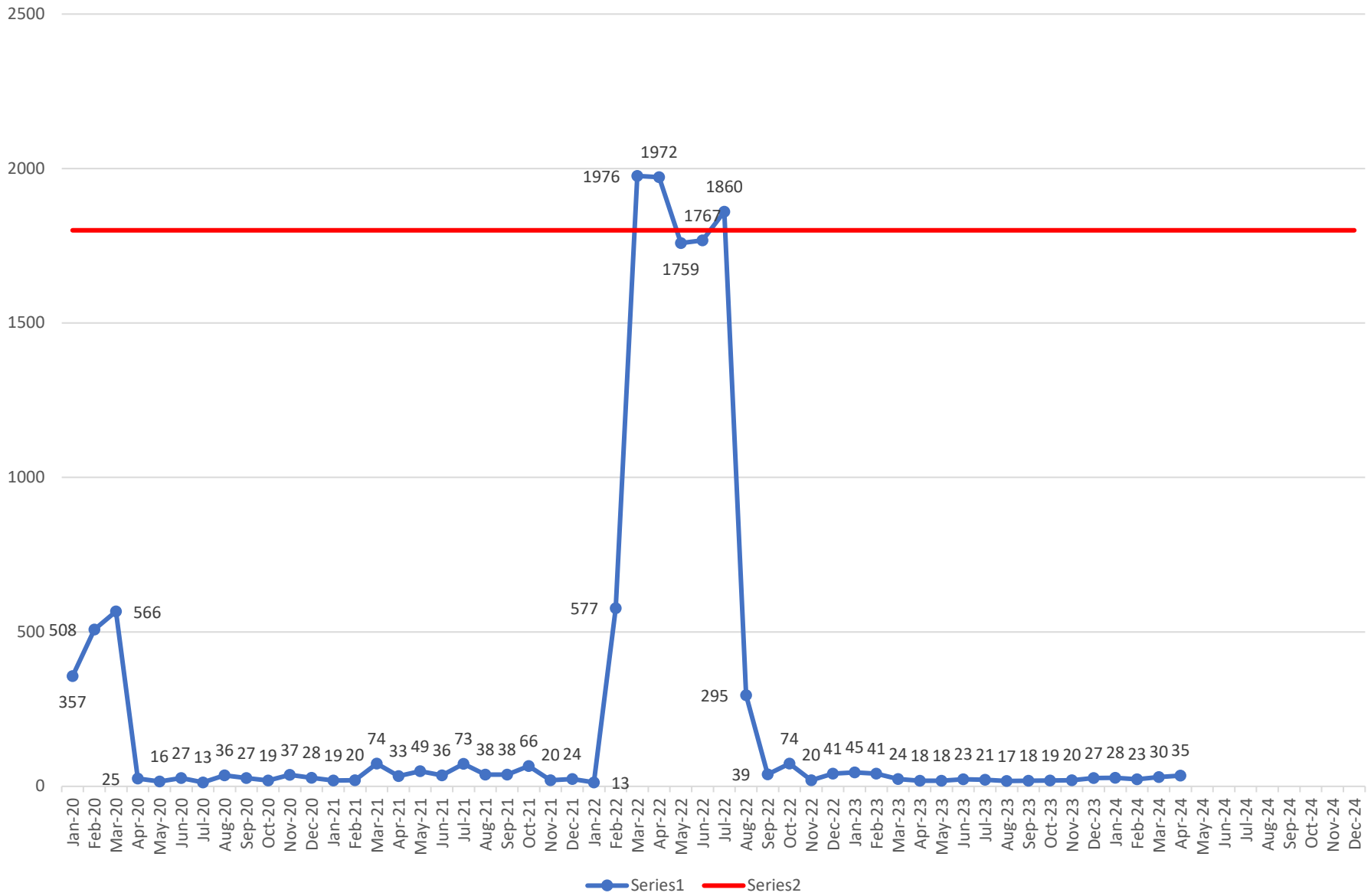


2020-2024 Phos

Limit = 1.0 mg/L/Day Monthly Avg



2020-2024 NH3 in Avg. Lbs/Day
Limit = 1800 Lbs/Day



Superintendents Summary Report for 2024																														
	FLOW	Precip	CBOD5			REM	Tot Susp Solids			REM	Settleable Solids			REM	Total Nitrogen			REM	Phosphorous			REM	Ammonia			REM	TKN			REM
	MGD	Inches	In	out	%	In	out	%	In	out	%	In	out	%	In	out	%	In	out	%	In	out	%	In	out	%	In	out	%	
	AVG		limit			limit			limit			limit			limit			limit			limit			limit			limit			
			18 mg/L				20 mg/L				0.3 mL/L				6.0 mg/L				1.0 mg/L				1800 lbs./Day				11000 lbs./Day			
Jan	26.40	4.71	116	10	91%	123	5	96%	7.40	0.10	99%	12.9	3.6	72%	2.40	0.340	86%	7.30	0.14	98%	12.3	1.2	90%							
Feb	18.72	1.63	181	8	96%	194	3	98%	11.10	0.10	99%	17.8	3.9	78%	3.80	0.290	92%	12.90	0.15	99%	17.7	1.5	92%							
Mar	24.33	4.10	137	7	95%	153	4	97%	7.70	0.10	99%	14.2	4.8	66%	2.64	0.358	86%	9.00	0.149	98%	13.7	1.4	90%							
Apr	22.87	4.42	150	8	95%	170	5	97%	9.80	0.10	99%	14.9	4.4	70%	3.19	0.459	86%	9.50	0.202	98%	14.6	1.3	91%							
May																														
Jun																														
Jul																														
Aug																														
Sep																														
Oct																														
Nov																														
Dec																														
		TOT																												
Avg	23.08	14.86	146	8	94%	160	4.3	97%	9.00	0.10	99%	15.0	4.2	72%	3.01	0.362	88%	9.68	0.16	98%	14.58	1.35	91%							
<p style="text-align: center;">Ammonia limit equates to approx 6 mg/L monthly Avg. / TKN limit equates to 38 mg/L Monthly Avg.</p> <p style="text-align: center;">TN limit is 6.0 mg/L From O1A REM = Removal %</p> <p style="text-align: center;">The Permit for TN = Monitoring Monthly Avg. from Outfall OO1, Not to Exceed 639,261 lbs. as a Rolling 12 Month Avg.</p> <p style="text-align: center;">Outfall OO1 includes Flow Through O1A (DN cells) and O1B (DN Cell Bypass)</p> <p style="text-align: center;">These numbers represent Outfall from OO1</p>																														

Landfill 2024 Summary

Date	Digested	Lime Stab	Solids Total		Bar screen	Grit and Screen		Grease
	Tons	Tons	Tons	Cost	Tons	Tons	Cost	Tons
January	717.02		717.02	\$28,680.80		22.98	\$1,034.10	
February	613.29		613.29	\$24,531.60		17.01	\$765.45	
March	666.43		666.43	\$26,657.20		29.68	\$1,335.60	
April	685.81		685.81	\$27,432.40		23.46	\$1,055.70	
May								
June								
July								
August								
September								
October								
November								
December								
Average	670.64		670.64	\$26,825.50		23.28	\$1,047.71	
Total	2,682.55		2,682.55	\$107,302.00		93.13	\$4,190.85	
				\$40/Ton			\$45/Ton	

\$111,492.85

Annual Cost to Date

\$420,000 budgeted for 2024