

## March Superintendents Report

April 9, 2024

4.10 inches of Precipitation in March.

Average flow 24.33 MGD, with a total of 754.28 Million gallons treated.

All Permit numbers look good. We have had a struggle this winter with Total Nitrogen, due to high flow and the Modulating valve being out of service. Thankfully that has been replaced and appears to be working as intended. Thanks to the mechanical department for working with representatives from the valve manufacturers.

We have been having meetings with the DEC in regards to our NY2A Permit application. Several key changes are:

Consolidating Binghamton, Johnson City and the Plant under one permit. Added sampling for PFAS & 1,4 Dioxane, Dissolved Oxygen, Free Cyanide, Total Phenols, Some minor new calculations based on data we already monitor, Some wording changes in the Mercury Minimization Program and Billing changes to the 3 permits. They will now fall under the Permit number assigned to the Treatment plant. This is still ongoing and there will be a public comment period prior to any changes.

Both Operators that went to Operator 4 School received their certificates and will take the test as soon as they meet the minimum time in trade requirement.

We have another Operator 2 who has requested to attend school and will take his Operator 4 test when he meets the requirements.

The Assistant Superintendent and Superintendent have completed the Advanced Wastewater Course.

We received the Appraisal from Industrial appraisal and the Facilities Engineer and CMMS Mechanic have been adding budget values to the CMMS assets.

Superintendents Summary Report for 2024																														
	FLOW	Precip	CBOD5			REM	Tot Susp Solids			REM	Settleable Solids			REM	Total Nitrogen			REM	Phosphorous			REM	Ammonia			REM	TKN			REM
	MGD	Inches	In	out	%	In	out	%	In	out	%	In	out	%	In	out	%	In	out	%	In	out	limit	In	out	limit	In	out	limit	
	AVG		18 mg/L				20 mg/L				0.3 mL/L				6.0 mg/L				1.0 mg/L				1800 lbs./Day				11000 lbs./Day			
Jan	26.40	4.71	116	10	91%	123	5	96%	7.40	0.10	99%	12.9	3.6	72%	2.40	0.340	86%	7.30	0.14	98%	12.3	1.2	90%							
Feb	18.72	1.63	181	8	96%	194	3	98%	11.10	0.1	99%	17.8	3.9	78%	3.80	0.290	92%	12.90	0.15	99%	17.7	1.5	92%							
Mar	24.33	4.10	137	7	95%	153	4.0	97%	7.70	0.1	99%				2.64	0.358	86%	9.00	0.149	98%										
Apr																														
May																														
Jun																														
Jul																														
Aug																														
Sep																														
Oct																														
Nov																														
Dec																														
		TOT																												
Avg	23.15	10.44	145	8	94%	157	4.0	97%	8.73	0.10	99%	15.4	3.8	75%	2.95	0.329	88%	9.73	0.15	98%	15.00	1.35	91%							
<p style="text-align: center;"><b>Ammonia Lbs in = 51,156    Ammonia Lbs out = 919 (calculated)</b></p> <p style="text-align: center;"><b>With 5 data points remaining TN 4.7 mg/L</b></p> <p style="text-align: center;"><b>With 5 data points remaining TKN 1.43 mg/L</b></p>																														
<p style="text-align: center;"><b>Ammonia limit equates to approx 6 mg/L monthly Avg. / TKN limit equates to 38 mg/L Monthly Avg.</b></p> <p style="text-align: center;"><b>TN limit is 6.0 mg/L From O1A    REM = Removal %</b></p> <p style="text-align: center;"><b>The Permit for TN = Monitoring Monthly Avg. from Outfall OO1, Not to Exceed 639,261 lbs. as a Rolling 12 Month Avg.</b></p> <p style="text-align: center;"><b>Outfall OO1 includes Flow Through O1A (DN cells) and O1B (DN Cell Bypass)</b></p> <p style="text-align: center;"><b>These numbers represent Outfall from OO1</b></p>																														

### Landfill 2024 Summary

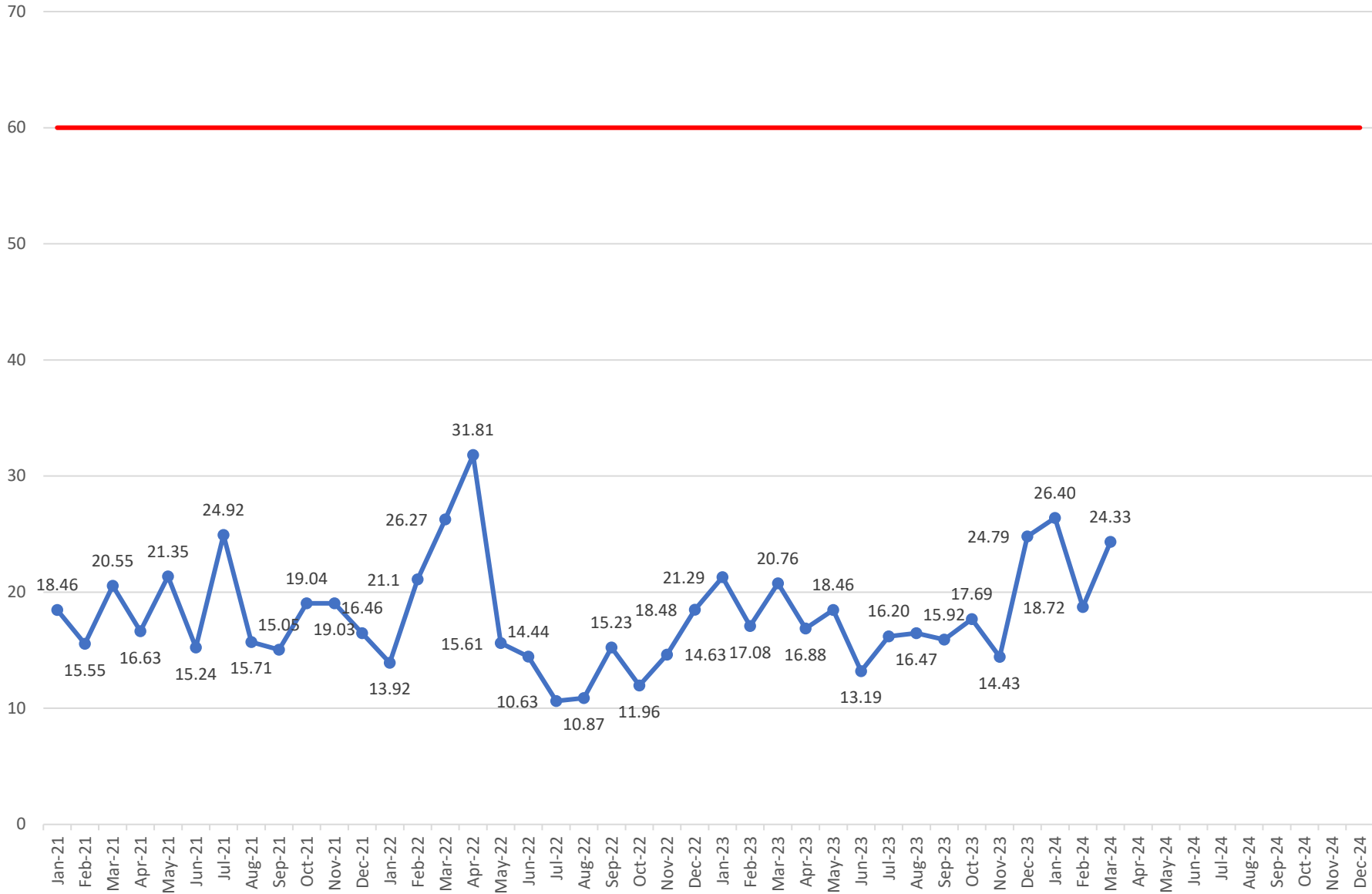
Date	Digested	Lime Stab	Solids Total		Bar screen	Grit and Screen		Grease
	Tons	Tons	Tons	Cost	Tons	Tons	Cost	Tons
January	717.02		717.02	\$28,680.80		22.98	\$1,034.10	
February	613.29		613.29	\$24,531.60		17.01	\$765.45	
March	666.43		666.43	\$26,657.20		29.68	\$1,335.60	
April								
May								
June								
July								
August								
September								
October								
November								
December								
Average	665.58		665.58	\$26,623.20		23.22	\$1,045.05	
Total	1,996.74		1,996.74	\$79,869.60		69.67	\$3,135.15	
				\$40/Ton			\$45/Ton	

\$83,004.75

Annual Cost to Date

\$420,000 budgeted for 2024

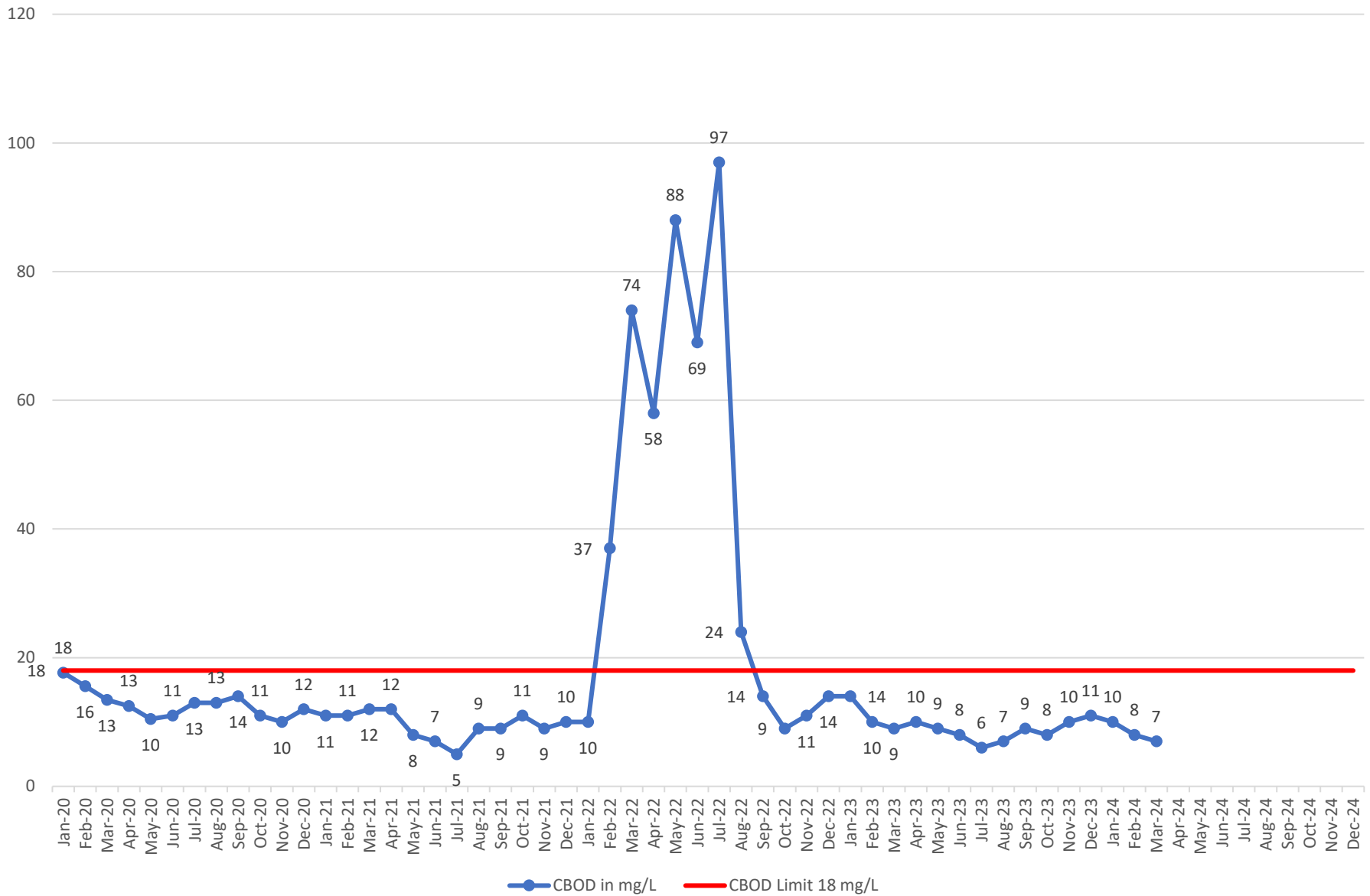
# 2021-2024 Flow



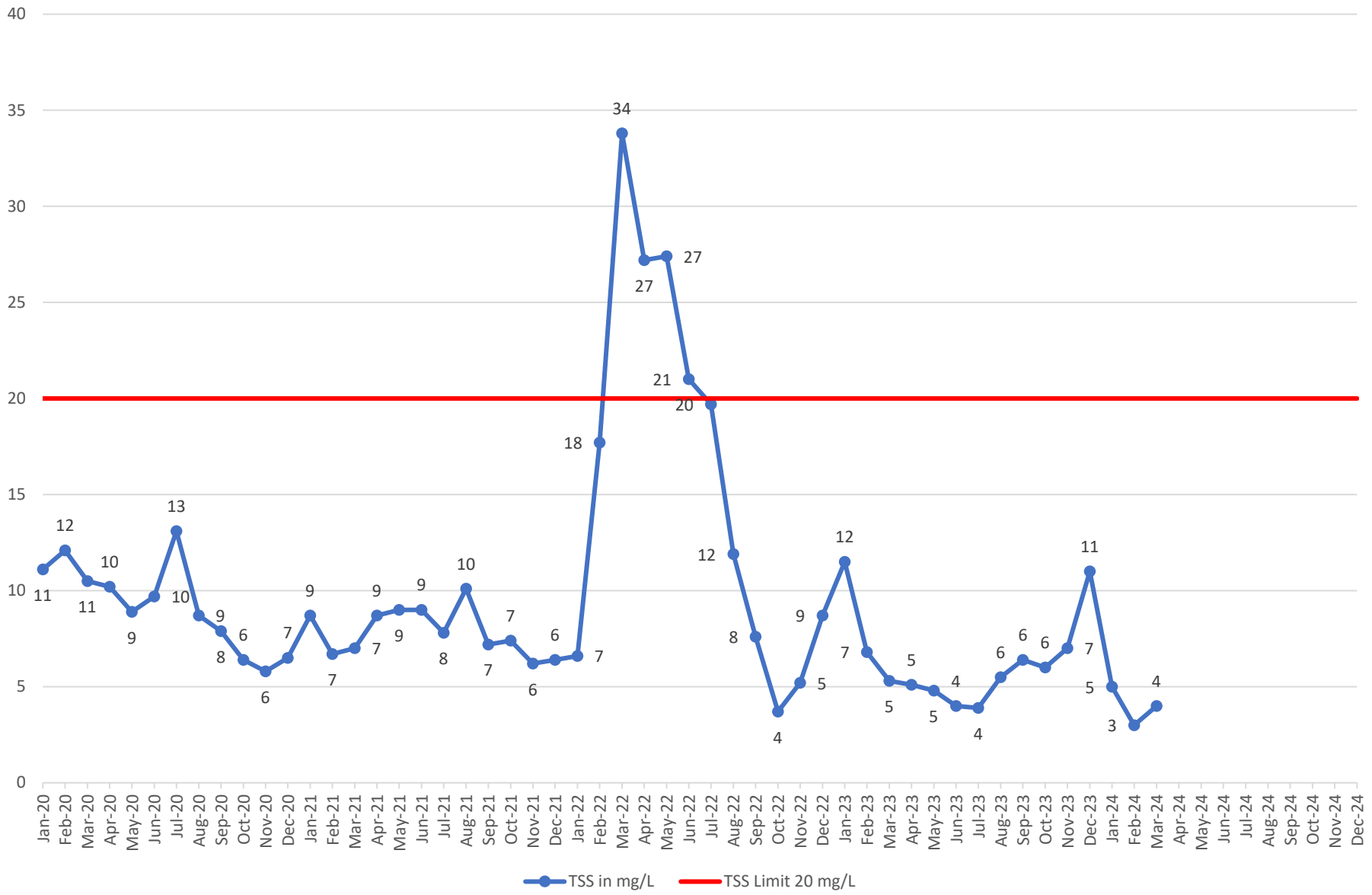
— Flow limit 60 MGD      ●— Flow in MGD

## 2020-2024 CBOD

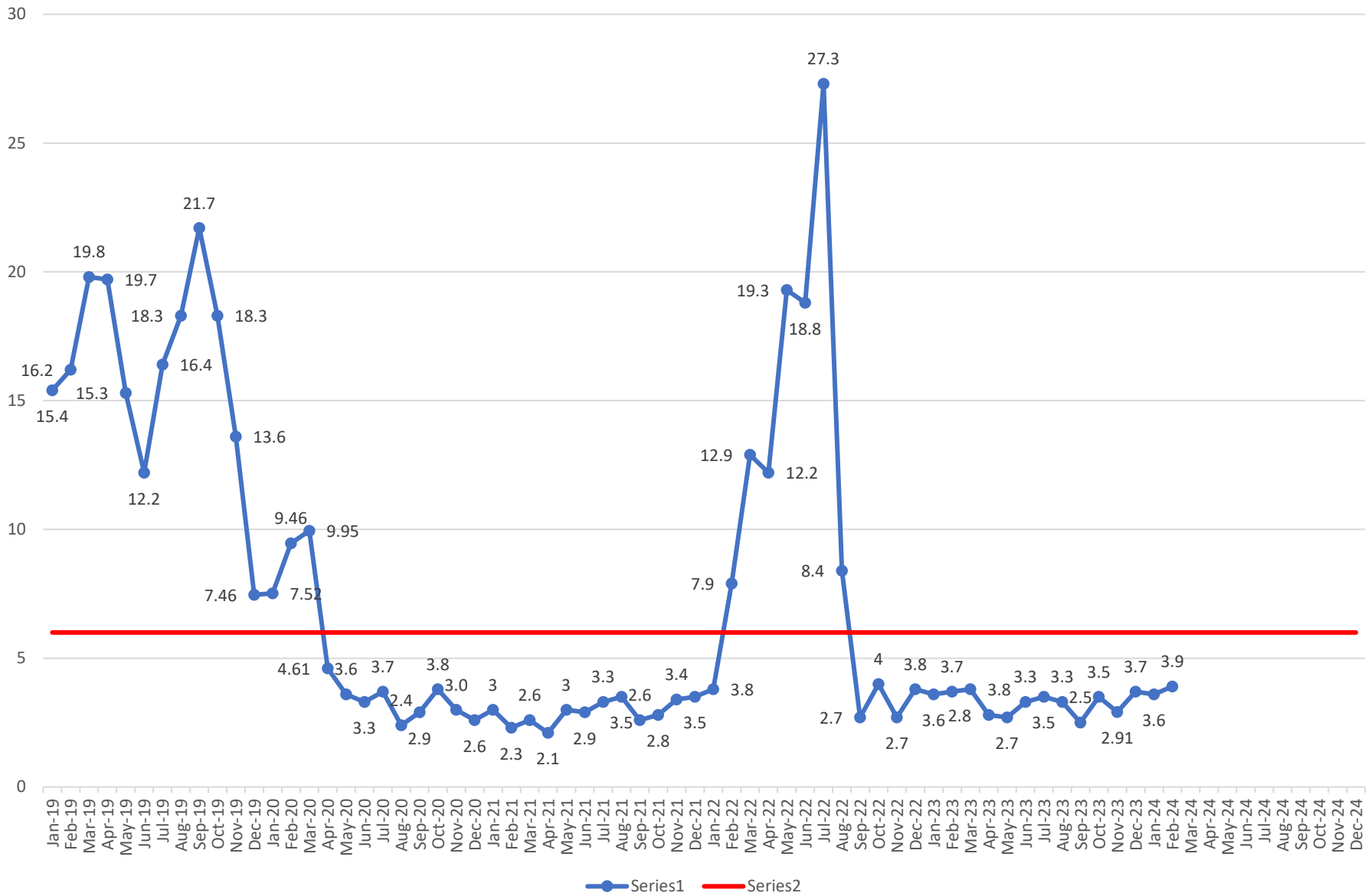
Limit = 18 mg/L/Day Monthly Avg



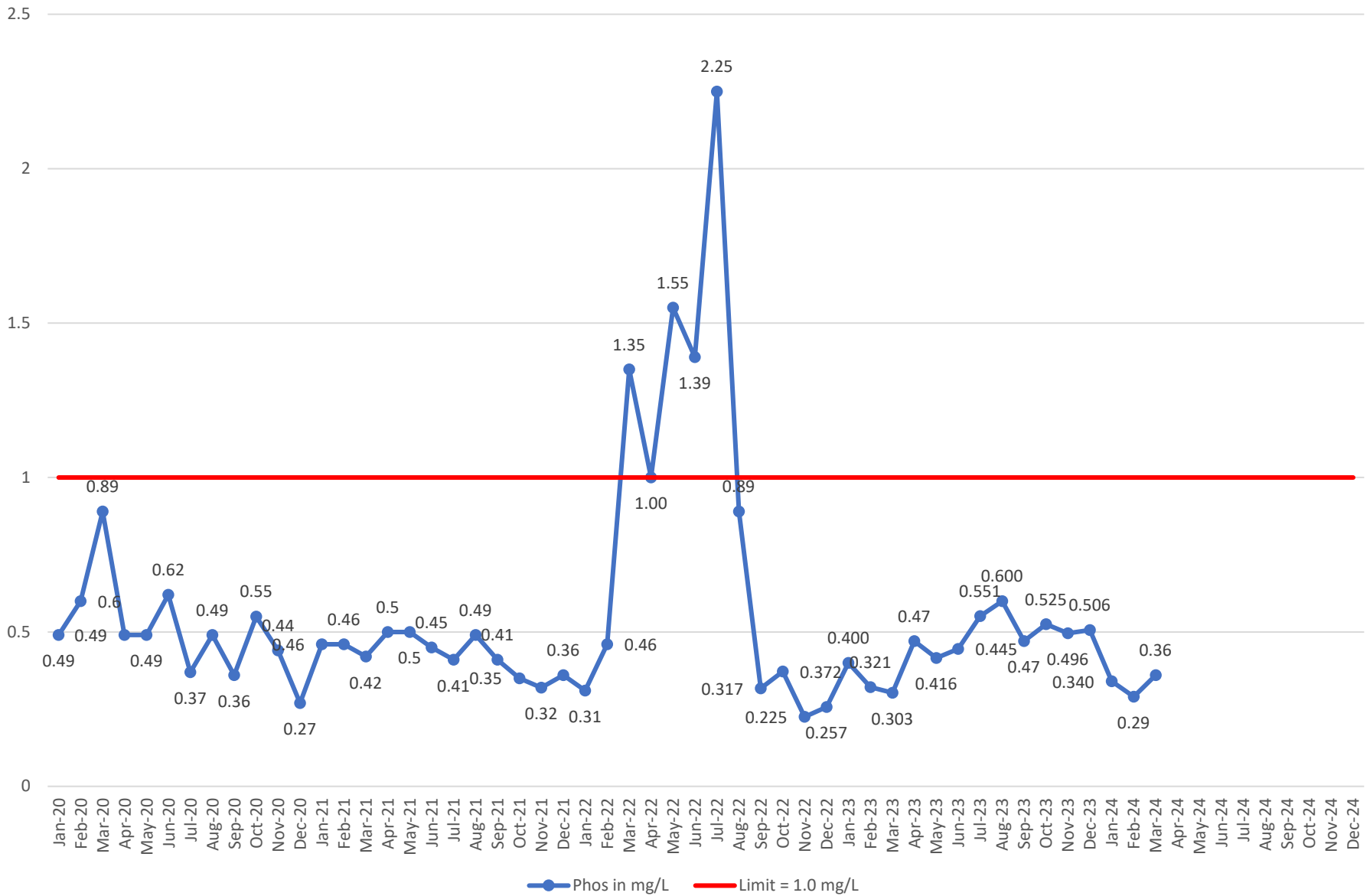
### TSS 2020-2024 Limit = 20 mg/L/Day Monthly Avg



TN 2019-2024  
Limit = 6.0 mg/L /Day Monthly Avg



### 2020-2024 Phos Limit = 1.0 mg/L/Day Monthly Avg





2020-2024 NH3 in Avg. Lbs/Day  
Limit = 1800 Lbs/Day

