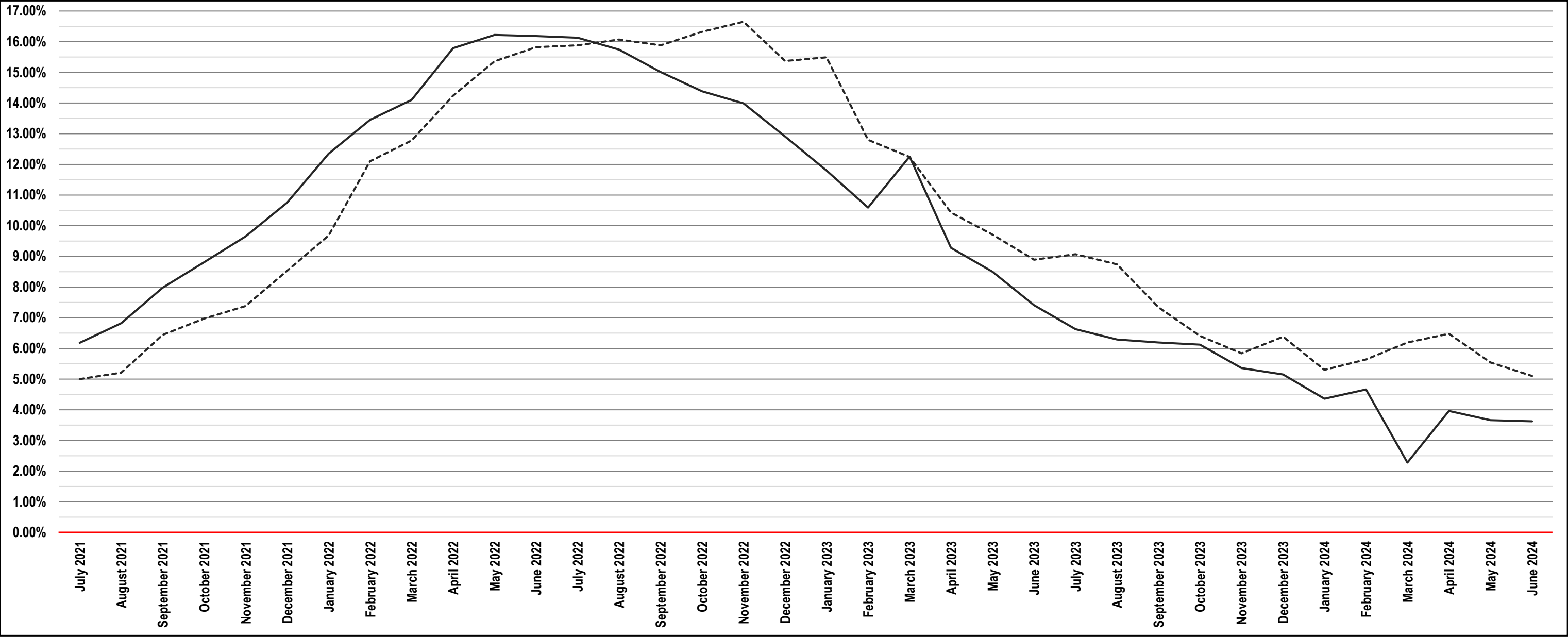


Producer Price Index [PPI] for General Purpose Industrial Machinery, U.S. Average, not seasonally adjusted
Annualized Change for Trailing 12 months [—] ending . . .

- AND -

Producer Price Index [PPI] for Pumps, Compressors, and Equipment, U.S. Average, not seasonally adjusted
Annualized Change for Trailing 12 months [----] ending . . .



Data Series ID: WPU114 [monthly - General Purpose Machinery];
 WPU1141 [monthly - Pumps, Compressors, and Equipment];

data courtesy of: **U.S. BUREAU OF LABOR STATISTICS**
 Division of Producer Price Indexes
 PSB Suite 3840
 2 Massachusetts Avenue NE
 Washington, DC 20212-0001

**Inflation - PPI for General Purpose Industrial Machinery,
U.S. Average**
(not seasonally adjusted)

Annualized Change:	for Trailing	for Trailing	for Trailing
Month Ending	36 months	24 months	12 months
	%	%	%
July 2021			6.18%
August 2021			6.82%
September 2021			7.98%
October 2021			8.81%
November 2021			9.65%
December 2021			10.75%
January 2022			12.35%
February 2022			13.45%
March 2022			14.10%
April 2022			15.79%
May 2022			16.22%
June 2022			16.18%
July 2022			16.13%
August 2022			15.74%
September 2022			15.01%
October 2022			14.38%
November 2022			13.99%
December 2022			12.91%
January 2023			11.80%
February 2023			10.59%
March 2023			12.25%
April 2023			9.28%
May 2023			8.50%
June 2023			7.41%
July 2023			6.63%
August 2023			6.29%
September 2023			6.19%
October 2023			6.12%
November 2023			5.36%
December 2023			5.15%
January 2024			4.36%
February 2024			4.66%
March 2024			2.28%
April 2024			3.96%
May 2024			3.66%
June 2024			3.62%

Data Series ID: WPU114

**Inflation - PPI for Pumps, Compressors, and Equipment,
U.S. Average**
(not seasonally adjusted)

Annualized Change:	for Trailing	for Trailing	for Trailing
Month Ending	36 months	24 months	12 months
	%	%	%
July 2021			5.00%
August 2021			5.21%
September 2021			6.44%
October 2021			6.97%
November 2021			7.38%
December 2021			8.53%
January 2022			9.68%
February 2022			12.10%
March 2022			12.78%
April 2022			14.24%
May 2022			15.36%
June 2022			15.82%
July 2022			15.88%
August 2022			16.07%
September 2022			15.88%
October 2022			16.32%
November 2022			16.65%
December 2022			15.37%
January 2023			15.49%
February 2023			12.80%
March 2023			12.24%
April 2023			10.43%
May 2023			9.71%
June 2023			8.89%
July 2023			9.07%
August 2023			8.74%
September 2023			7.34%
October 2023			6.41%
November 2023			5.84%
December 2023			6.38%
January 2024			5.30%
February 2024			5.64%
March 2024			6.19%
April 2024			6.48%
May 2024			5.54%
June 2024			5.10%

Data Series ID: WPU1141