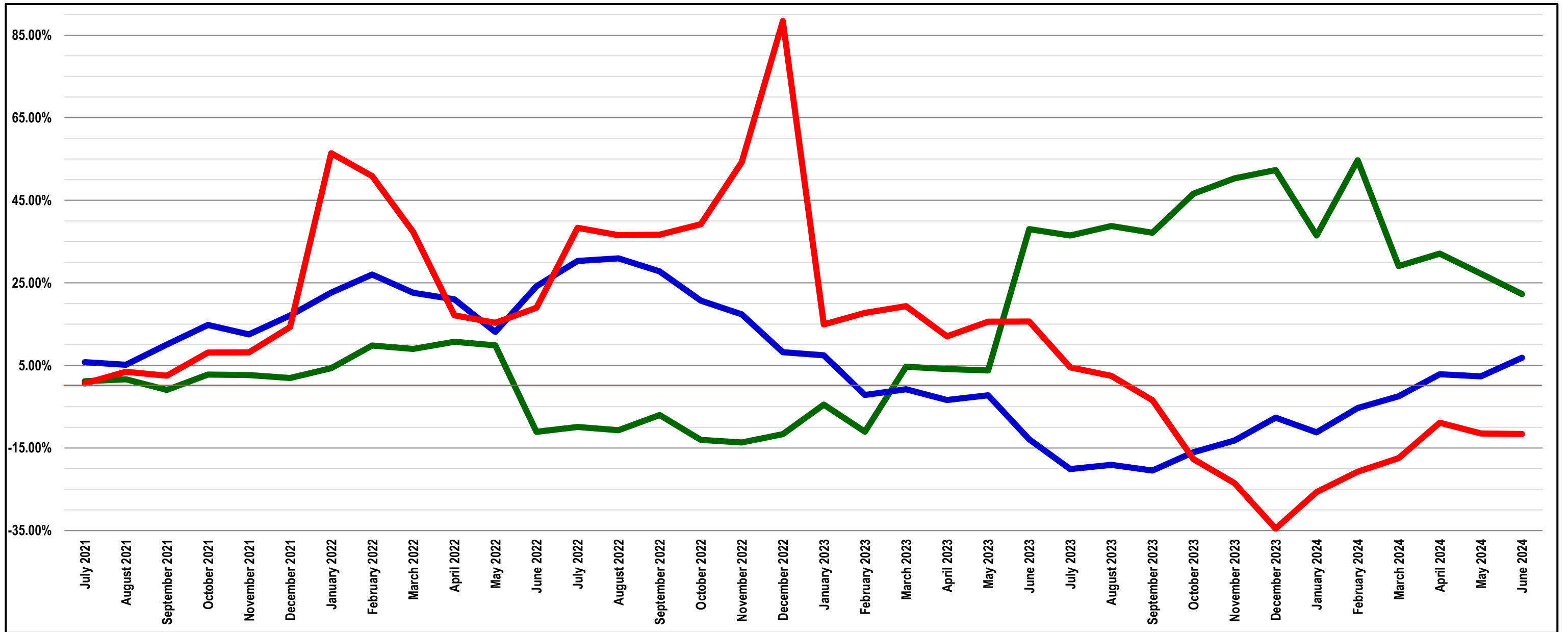


**Producer Price Index [PPI] for Industrial Electric Power, Annualized Change for Trailing 12 Months, not seasonally adjusted  
East North Central Region [—], New England Region [—], and Middle Atlantic Region [—] ending . . .**



Data Series ID: WPU054321013 [monthly - Industrial Electricity (East North Central Region)];  
 Data Series ID: WPU054321011 [monthly - Industrial Electricity (New England Region)]; and  
 Data Series ID: WPU054321012 [monthly - Industrial Electricity (Middle Atlantic Region)].

data courtesy of: **U.S. BUREAU OF LABOR STATISTICS**  
 Division of Producer Price Indexes  
 PSB Suite 3840  
 2 Massachusetts Avenue NE  
 Washington, DC 20212-0001

**Inflation - PPI for Industrial Electric Power  
for Trailing 12 Months (36 observations)**  
(not seasonally adjusted)

**Annualized Change:**    **... 1013**    **... 1011**    **... 1012**

<b>Month Ending</b>	East N. Cent. %	New England %	Mid. Atlantic %
July 2021	1.16%	0.64%	5.80%
August 2021	1.63%	3.44%	5.14%
September 2021	-0.93%	2.52%	10.04%
October 2021	2.78%	8.12%	14.79%
November 2021	2.65%	8.16%	12.52%
December 2021	1.94%	14.29%	17.09%
January 2022	4.33%	56.40%	22.65%
February 2022	9.82%	50.87%	27.02%
March 2022	9.01%	37.28%	22.59%
April 2022	10.72%	17.15%	21.02%
May 2022	9.86%	15.30%	13.11%
June 2022	-11.09%	18.94%	24.18%
July 2022	-9.92%	38.33%	30.31%
August 2022	-10.69%	36.55%	30.96%
September 2022	-7.01%	36.66%	27.76%
October 2022	-13.03%	39.20%	20.69%
November 2022	-13.66%	54.21%	17.38%
December 2022	-11.65%	88.43%	8.20%
January 2023	-4.49%	14.93%	7.43%
February 2023	-11.05%	17.74%	-2.15%
March 2023	4.70%	19.33%	-0.77%
April 2023	4.11%	12.03%	-3.38%
May 2023	3.76%	15.58%	-2.24%
June 2023	38.01%	15.62%	-12.93%
July 2023	36.45%	4.53%	-20.12%
August 2023	38.78%	2.47%	-19.08%
September 2023	37.12%	-3.41%	-20.45%
October 2023	46.57%	-17.68%	-16.04%
November 2023	50.30%	-23.49%	-13.19%
December 2023	52.32%	-34.50%	-7.64%
January 2024	36.45%	-25.70%	-11.20%
February 2024	54.71%	-20.72%	-5.34%
March 2024	29.09%	-17.46%	-2.47%
April 2024	32.09%	-8.86%	2.87%
May 2024	27.22%	-11.47%	2.33%
June 2024	22.27%	-11.60%	6.84%

**Data Series ID: WPU054321013** (East North Central)

**Data Series ID: WPU054321011** (New England)

**Data Series ID: WPU054321012** (Middle Atlantic)