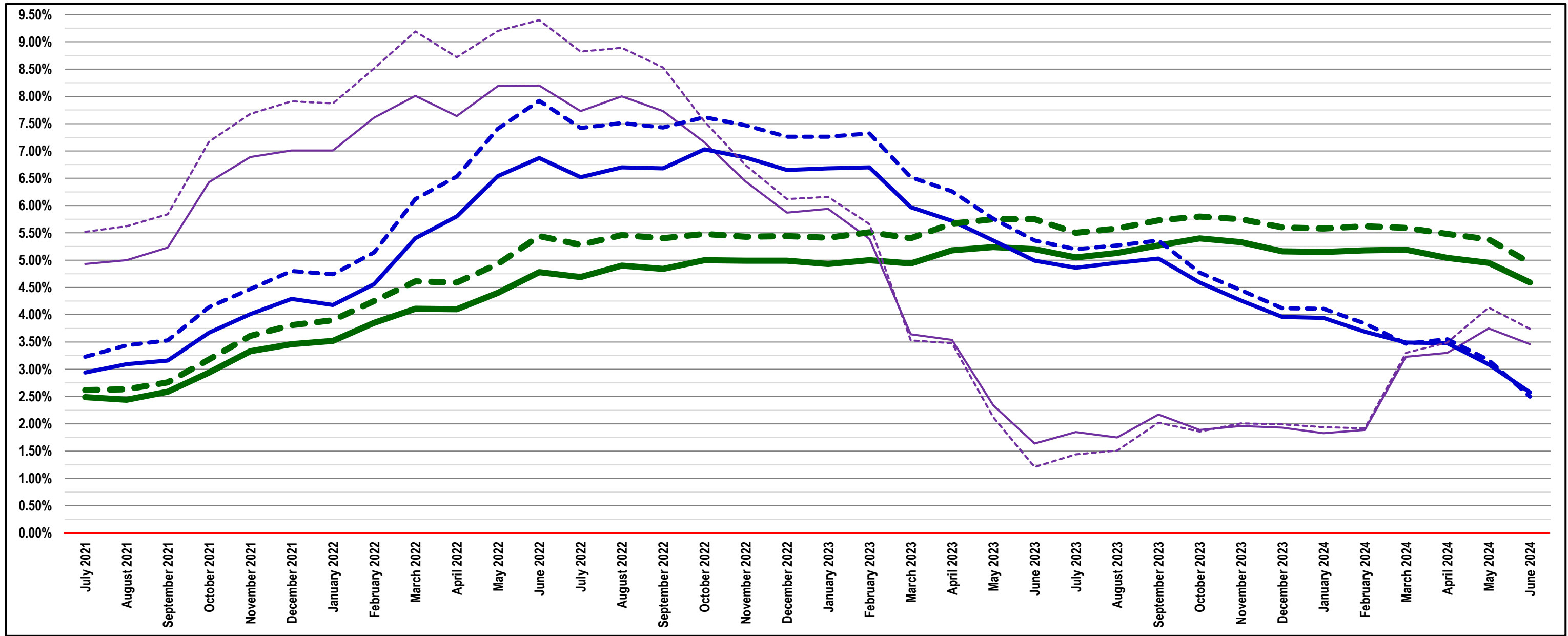


Consumer Price Index [CPI] for All Urban Consumers, All Items, Northeast Urban, Community Class Size B/C (50,000 - 1,500,000), not seasonally adjusted
Annualized Change for Trailing 36 months [—■—], Trailing 24 months [—■—], and Trailing 12 months [—■—] ending . . .

- AND -

Consumer Price Index [CPI] for Wage Earners/Clerical, All Items, Northeast Urban, Community Class Size B/C (50,000 - 1,500,000), not seasonally adjusted
Annualized Change for Trailing 36 months [-■-■-], Trailing 24 months [-■-■-], and Trailing 12 months [-■-■-] ending . . .



Data Series ID: CUURN100SA0 [monthly - All Urban Consumers];
 CWURN100SA0 [monthly - Wage Earners/Clerical];

data courtesy of: **U.S. BUREAU OF LABOR STATISTICS**
 Division of Consumer Prices and Price Indexes
 Suite 3130
 2 Massachusetts Avenue NE
 Washington, DC 20212-0001

Inflation - CPI for All Urban Consumers, All Items
Northeast Urban, Class Size B/C (50,000 - 1,500,000)
(not seasonally adjusted)

Annualized Change:	for Trailing	for Trailing	for Trailing
Month Ending	36 months	24 months	12 months
	%	%	%
July 2021	2.49%	2.94%	4.93%
August 2021	2.44%	3.10%	5.00%
September 2021	2.59%	3.16%	5.23%
October 2021	2.94%	3.67%	6.43%
November 2021	3.33%	4.01%	6.89%
December 2021	3.46%	4.29%	7.01%
January 2022	3.52%	4.18%	7.01%
February 2022	3.85%	4.56%	7.61%
March 2022	4.11%	5.40%	8.01%
April 2022	4.10%	5.80%	7.64%
May 2022	4.40%	6.54%	8.19%
June 2022	4.78%	6.87%	8.20%
July 2022	4.69%	6.52%	7.73%
August 2022	4.90%	6.70%	8.00%
September 2022	4.84%	6.68%	7.73%
October 2022	5.00%	7.03%	7.16%
November 2022	4.99%	6.88%	6.44%
December 2022	4.99%	6.65%	5.87%
January 2023	4.93%	6.68%	5.94%
February 2023	5.00%	6.70%	5.39%
March 2023	4.94%	5.97%	3.64%
April 2023	5.18%	5.72%	3.54%
May 2023	5.24%	5.36%	2.34%
June 2023	5.20%	4.99%	1.64%
July 2023	5.05%	4.86%	1.85%
August 2023	5.13%	4.95%	1.75%
September 2023	5.27%	5.03%	2.17%
October 2023	5.40%	4.59%	1.89%
November 2023	5.33%	4.26%	1.96%
December 2023	5.16%	3.96%	1.93%
January 2024	5.15%	3.94%	1.83%
February 2024	5.18%	3.69%	1.89%
March 2024	5.19%	3.49%	3.23%
April 2024	5.04%	3.48%	3.30%
May 2024	4.95%	3.09%	3.75%
June 2024	4.59%	2.58%	3.46%

Data Series ID: CUURN100SA0

Inflation - CPI for Wage Earners/Clerical, All Items
Northeast Urban, Class Size B/C (50,000 - 1,500,000)
(not seasonally adjusted)

Annualized Change:	for Trailing	for Trailing	for Trailing
Month Ending	36 months	24 months	12 months
	%	%	%
July 2021	2.62%	3.23%	5.52%
August 2021	2.64%	3.44%	5.62%
September 2021	2.76%	3.53%	5.84%
October 2021	3.18%	4.14%	7.17%
November 2021	3.61%	4.47%	7.68%
December 2021	3.81%	4.80%	7.91%
January 2022	3.90%	4.74%	7.87%
February 2022	4.25%	5.14%	8.51%
March 2022	4.61%	6.12%	9.19%
April 2022	4.59%	6.53%	8.72%
May 2022	4.93%	7.41%	9.20%
June 2022	5.44%	7.92%	9.40%
July 2022	5.28%	7.42%	8.82%
August 2022	5.46%	7.51%	8.89%
September 2022	5.40%	7.43%	8.53%
October 2022	5.48%	7.62%	7.54%
November 2022	5.43%	7.47%	6.74%
December 2022	5.44%	7.26%	6.12%
January 2023	5.41%	7.26%	6.16%
February 2023	5.51%	7.32%	5.66%
March 2023	5.40%	6.52%	3.53%
April 2023	5.67%	6.26%	3.48%
May 2023	5.75%	5.76%	2.12%
June 2023	5.75%	5.36%	1.21%
July 2023	5.50%	5.20%	1.44%
August 2023	5.58%	5.27%	1.51%
September 2023	5.73%	5.36%	2.02%
October 2023	5.80%	4.77%	1.86%
November 2023	5.75%	4.45%	2.01%
December 2023	5.60%	4.12%	1.99%
January 2024	5.58%	4.11%	1.94%
February 2024	5.62%	3.84%	1.92%
March 2024	5.59%	3.47%	3.30%
April 2024	5.48%	3.55%	3.49%
May 2024	5.38%	3.17%	4.13%
June 2024	4.95%	2.50%	3.74%

Data Series ID: CWURN100SA0