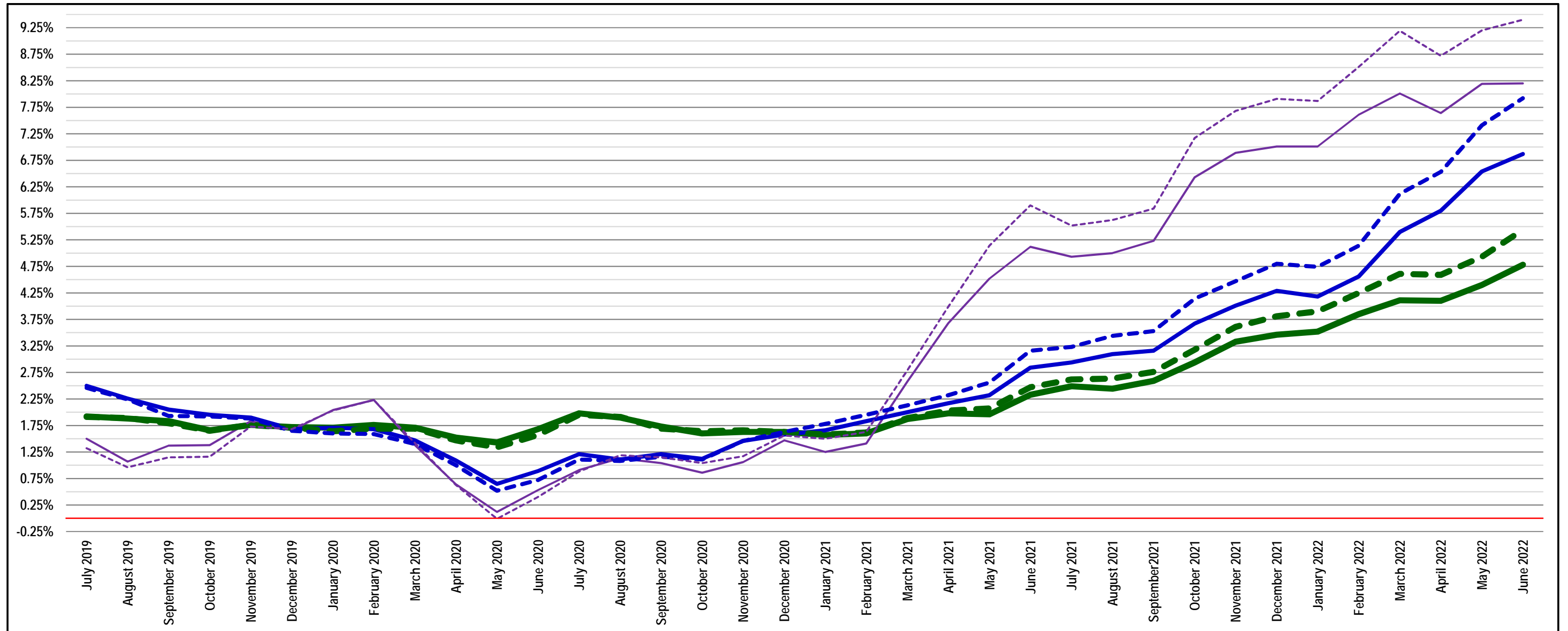


Consumer Price Index [CPI] for All Urban Consumers, All Items, Northeast Urban, Community Class Size B/C (50,000 - 1,500,000), not seasonally adjusted
 Annualized Change for Trailing 36 months [—], Trailing 24 months [—], and Trailing 12 months [—] ending . . .

-- AND --

Consumer Price Index [CPI] for Wage Earners/Clerical, All Items, Northeast Urban, Community Class Size B/C (50,000 - 1,500,000), not seasonally adjusted
 Annualized Change for Trailing 36 months [—], Trailing 24 months [—], and Trailing 12 months [—] ending . . .



Data Series ID: CUURN100SA0 [monthly - All Urban Consumers];
 CWURN100SA0 [monthly - Wage Earners/Clerical];

data courtesy of: **U.S. BUREAU OF LABOR STATISTICS**
 Division of Consumer Prices and Price Indexes
 Suite 3130
 2 Massachusetts Avenue NE
 Washington, DC 20212-0001

Inflation - CPI for All Urban Consumers, All Items
Northeast Urban, Class Size B/C (50,000 - 1,500,000)
(not seasonally adjusted)

<u>Annualized Change:</u>	<u>for Trailing</u>	<u>for Trailing</u>	<u>for Trailing</u>
<u>Month Ending</u>	<u>36 months</u>	<u>24 months</u>	<u>12 months</u>
	<u>%</u>	<u>%</u>	<u>%</u>
July 2019	1.92%	2.50%	1.50%
August 2019	1.88%	2.26%	1.07%
September 2019	1.83%	2.05%	1.37%
October 2019	1.66%	1.95%	1.38%
November 2019	1.76%	1.90%	1.83%
December 2019	1.72%	1.68%	1.66%
January 2020	1.71%	1.71%	2.04%
February 2020	1.76%	1.68%	2.23%
March 2020	1.71%	1.47%	1.38%
April 2020	1.52%	1.09%	0.64%
May 2020	1.43%	0.65%	0.12%
June 2020	1.68%	0.89%	0.53%
July 2020	1.98%	1.21%	0.91%
August 2020	1.90%	1.11%	1.13%
September 2020	1.73%	1.21%	1.04%
October 2020	1.60%	1.12%	0.86%
November 2020	1.63%	1.46%	1.06%
December 2020	1.63%	1.58%	1.47%
January 2021	1.57%	1.66%	1.25%
February 2021	1.60%	1.83%	1.41%
March 2021	1.87%	2.00%	2.58%
April 2021	1.98%	2.17%	3.68%
May 2021	1.96%	2.32%	4.52%
June 2021	2.33%	2.84%	5.12%
July 2021	2.49%	2.94%	4.93%
August 2021	2.44%	3.10%	5.00%
September 2021	2.59%	3.16%	5.23%
October 2021	2.94%	3.67%	6.43%
November 2021	3.33%	4.01%	6.89%
December 2021	3.46%	4.29%	7.01%
January 2022	3.52%	4.18%	7.01%
February 2022	3.85%	4.56%	7.61%
March 2022	4.11%	5.40%	8.01%
April 2022	4.10%	5.80%	7.64%
May 2022	4.40%	6.54%	8.19%
June 2022	4.78%	6.87%	8.20%

Data Series ID: **CUURN100SA0**

Inflation - CPI for Wage Earners/Clerical, All Items
Northeast Urban, Class Size B/C (50,000 - 1,500,000)
(not seasonally adjusted)

<u>Annualized Change:</u>	<u>for Trailing</u>	<u>for Trailing</u>	<u>for Trailing</u>
<u>Month Ending</u>	<u>36 months</u>	<u>24 months</u>	<u>12 months</u>
	<u>%</u>	<u>%</u>	<u>%</u>
July 2019	1.91%	2.46%	1.32%
August 2019	1.89%	2.24%	0.96%
September 2019	1.79%	1.93%	1.15%
October 2019	1.65%	1.92%	1.16%
November 2019	1.76%	1.88%	1.73%
December 2019	1.71%	1.65%	1.68%
January 2020	1.64%	1.60%	2.03%
February 2020	1.69%	1.59%	2.23%
March 2020	1.69%	1.40%	1.42%
April 2020	1.47%	1.00%	0.63%
May 2020	1.34%	0.52%	-0.01%
June 2020	1.57%	0.72%	0.40%
July 2020	1.95%	1.11%	0.88%
August 2020	1.91%	1.08%	1.19%
September 2020	1.69%	1.16%	1.15%
October 2020	1.64%	1.11%	1.04%
November 2020	1.66%	1.46%	1.17%
December 2020	1.63%	1.63%	1.56%
January 2021	1.58%	1.78%	1.50%
February 2021	1.62%	1.95%	1.63%
March 2021	1.89%	2.13%	2.79%
April 2021	2.03%	2.32%	3.99%
May 2021	2.07%	2.56%	5.14%
June 2021	2.47%	3.16%	5.90%
July 2021	2.62%	3.23%	5.52%
August 2021	2.64%	3.44%	5.62%
September 2021	2.76%	3.53%	5.84%
October 2021	3.18%	4.14%	7.17%
November 2021	3.61%	4.47%	7.68%
December 2021	3.81%	4.80%	7.91%
January 2022	3.90%	4.74%	7.87%
February 2022	4.25%	5.14%	8.51%
March 2022	4.61%	6.12%	9.19%
April 2022	4.59%	6.53%	8.72%
May 2022	4.93%	7.41%	9.20%
June 2022	5.44%	7.92%	9.40%

Data Series ID: **CWURN100SA0**